




Troubadour

THEATRES

TROUBADOUR MERIDIAN WATER STUDIOS

A hand holds a clapperboard with a white sign in the center. The clapperboard has a black frame and a white sign with black text. The background is a blurred crowd of people, suggesting a film set or a public event. The clapperboard has a colorful striped pattern on the top bar.

WE HAVE THE
ANSWER TO
LONDON'S
SHORTAGE OF
STUDIOS



Troubadour
MERIDIAN WATER STUDIOS

5
SPEED
LIMIT

Troubadour Meridian Water Studios

Introducing an exciting new purpose built studio complex ideal for TV and Film shoots.

The studios are located on a 155,073 ft² plot in Enfield, North London, offering extensive space for workshops, offices, parking and load ins. The site offers excellent transport links being just off the North Circular and is in striking distance from all major London airports.

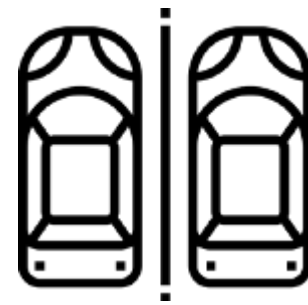
The soundproofed studios are fully flexible and adaptable with excellent weight bearing capabilities, making them ideal for hire within the film industry.



Fully flexible
spaces with over
24,000 Sq Ft of
office space



Excellent
transport
links. Within
the M25



Extensive
parking available



Over
65,000 Sq Ft
built





Stage 1



Size: 20,921ft² / 1944m²

Dimensions: 184ft x 126ft / 56m x 38.5m

Height: 62ft / 19m

Ground floor truss - meaning you can rig and hang at any point.



Fully Flexible state-of-the-art space with excellent weight and load bearing capabilities. Adaptable seating system for live audiences.



On site furnished production offices and dressing rooms equipped with WC and shower facilities.

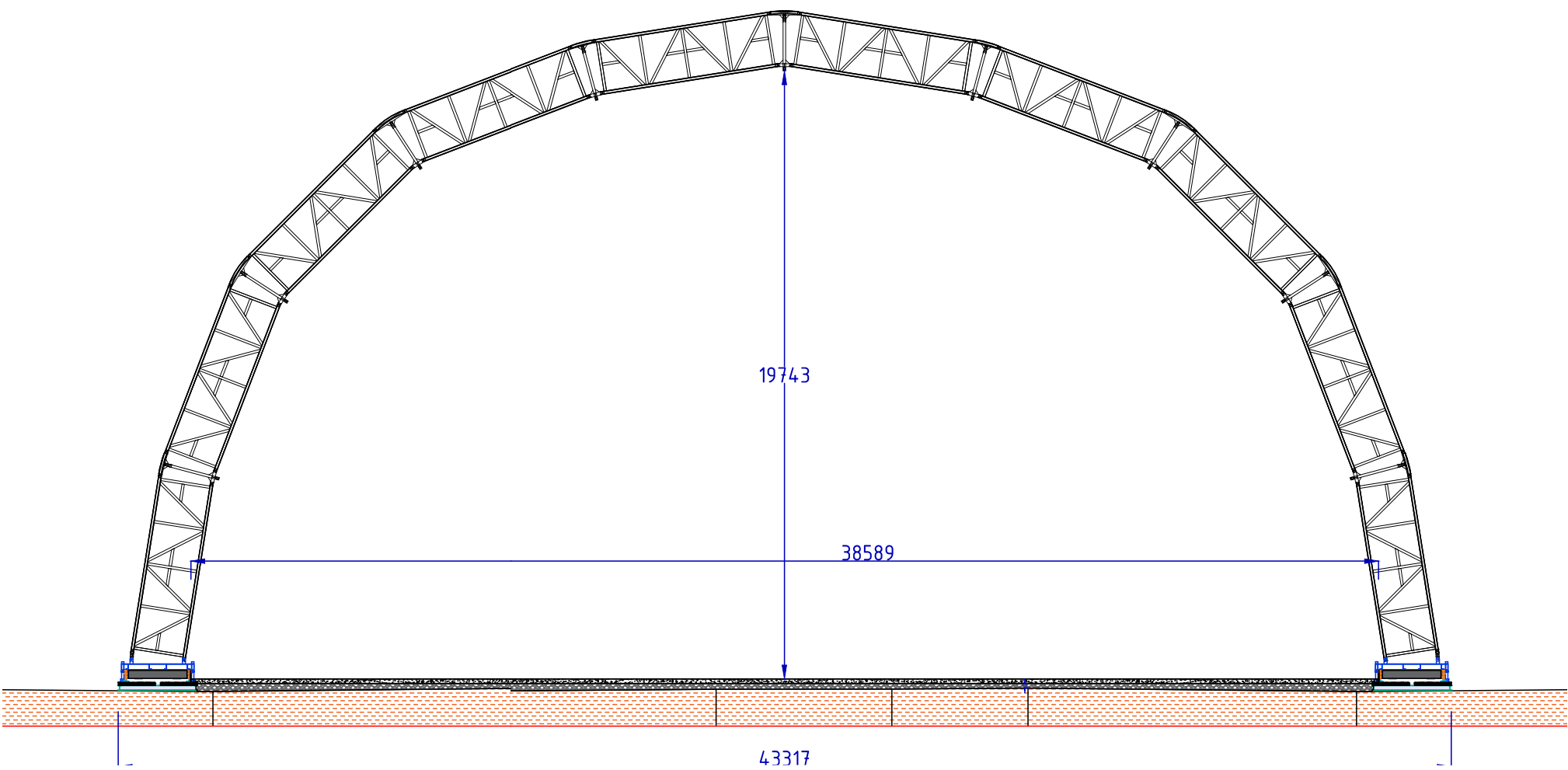
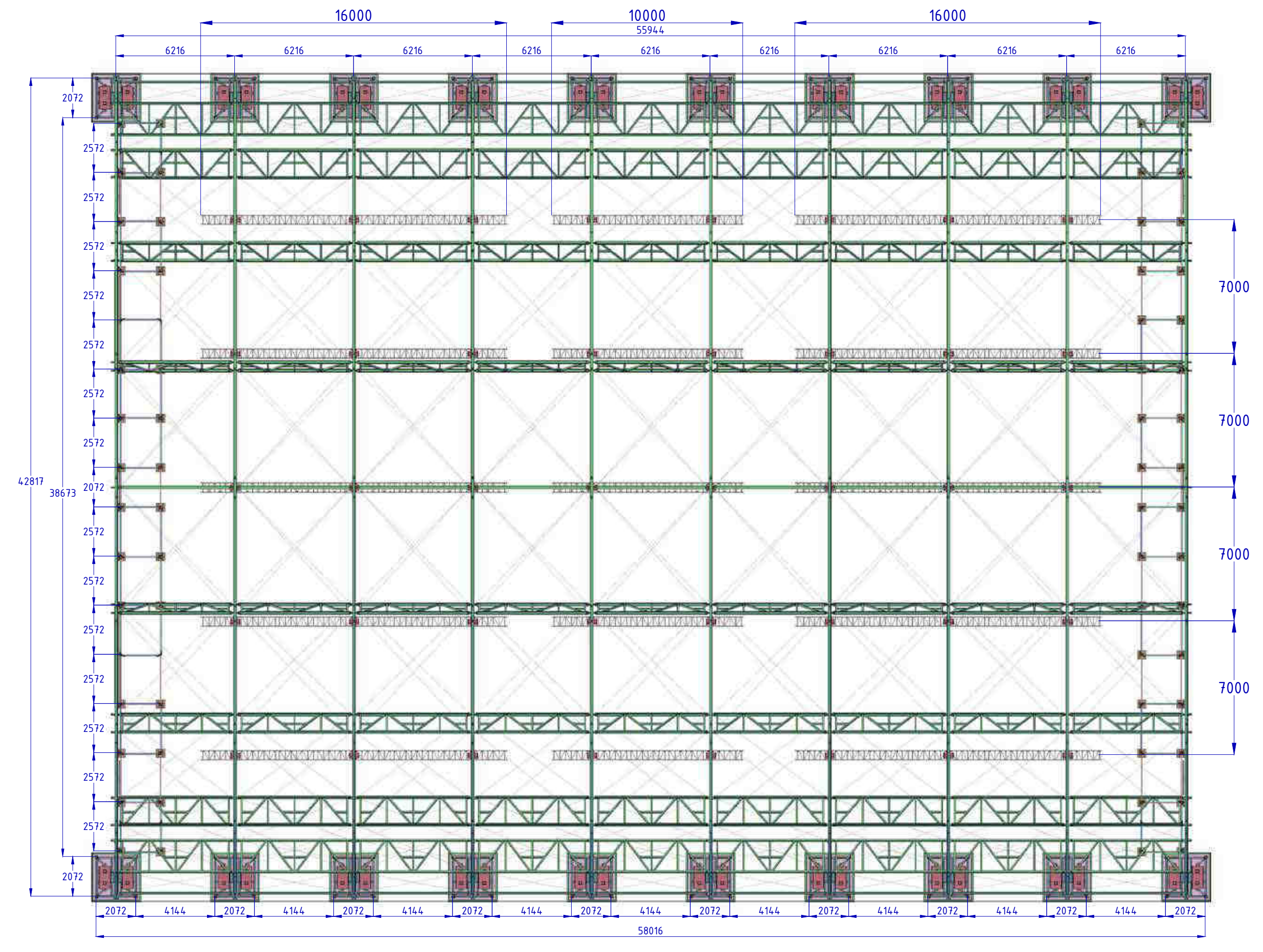


Large dock door for Artics access and good ground floor loading capabilities.



Highly effective insulation and sound proof properties. Fitted with removable acoustic panels.

Troubadour Stage 1 – Floor Plan





Stage 2



Size: 11,216ft² / 1042m²

Dimensions: 141ft x 79ft / 43m x 24m

Height: 55ft / 17m

Ground floor truss - meaning you can rig and hang at any point.



Fully Flexible state-of-the-art space with excellent weight and load bearing capabilities. Adaptable seating system for live audiences.



On site furnished production offices and dressing rooms equipped with WC and shower facilities.

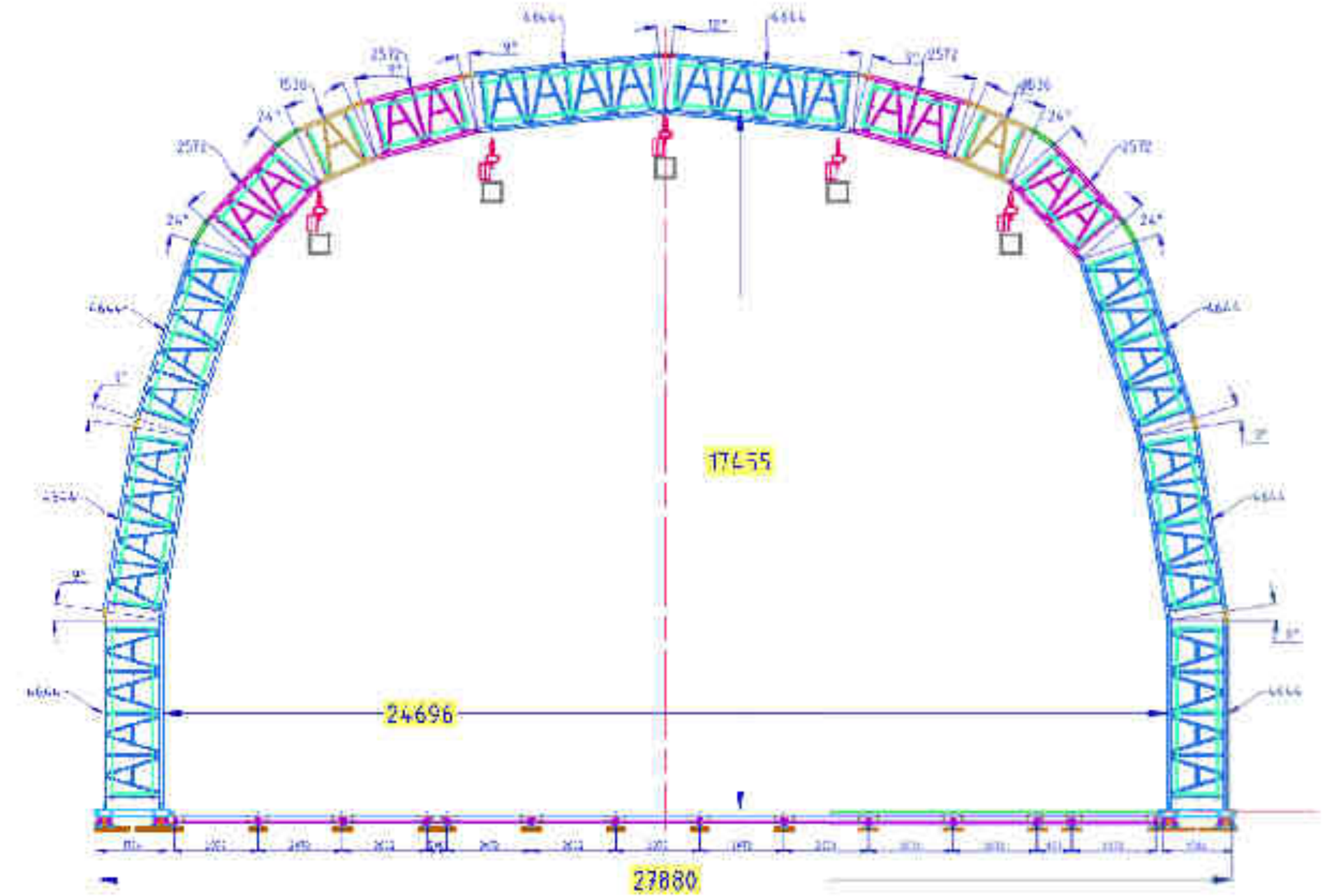
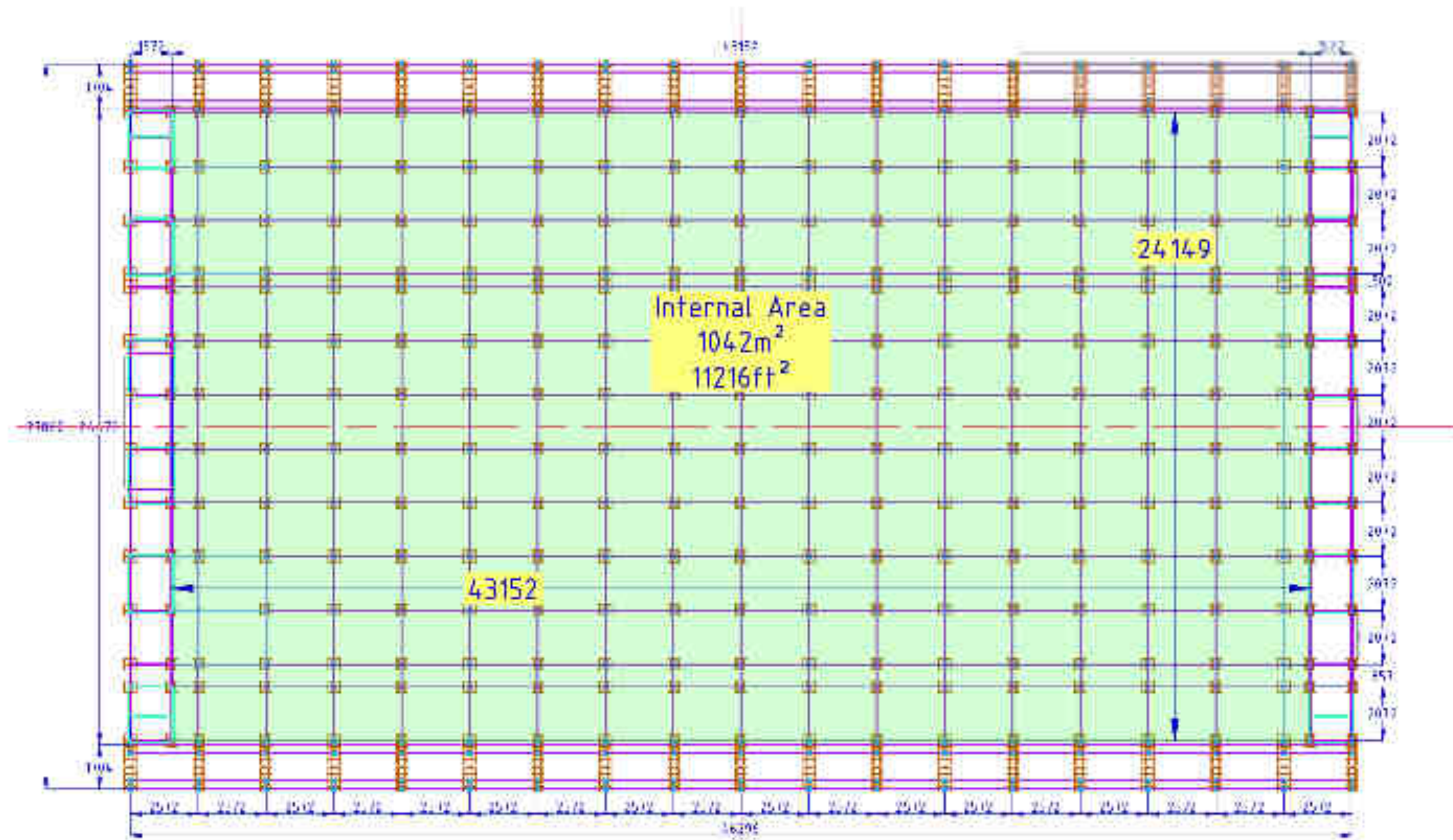


Large dock door for Artics access and good ground floor loading capabilities.



Highly effective insulation and sound proof properties. Fitted with removable acoustic black drapes.

Troubadour Stage 2- Floor Plan





Stage 3



Size: 8,213ft² / 763m²

Dimensions: 115ft x69ft / 35m x21m

Height: 46ft / 14m

Ground floor truss - meaning you can rig and hang at any point.



Fully Flexible state-of-the-art space with excellent weight and load bearing capabilities. Adaptable seating system for live audiences.



On site furnished production offices and dressing rooms equipped with WC and shower facilities.

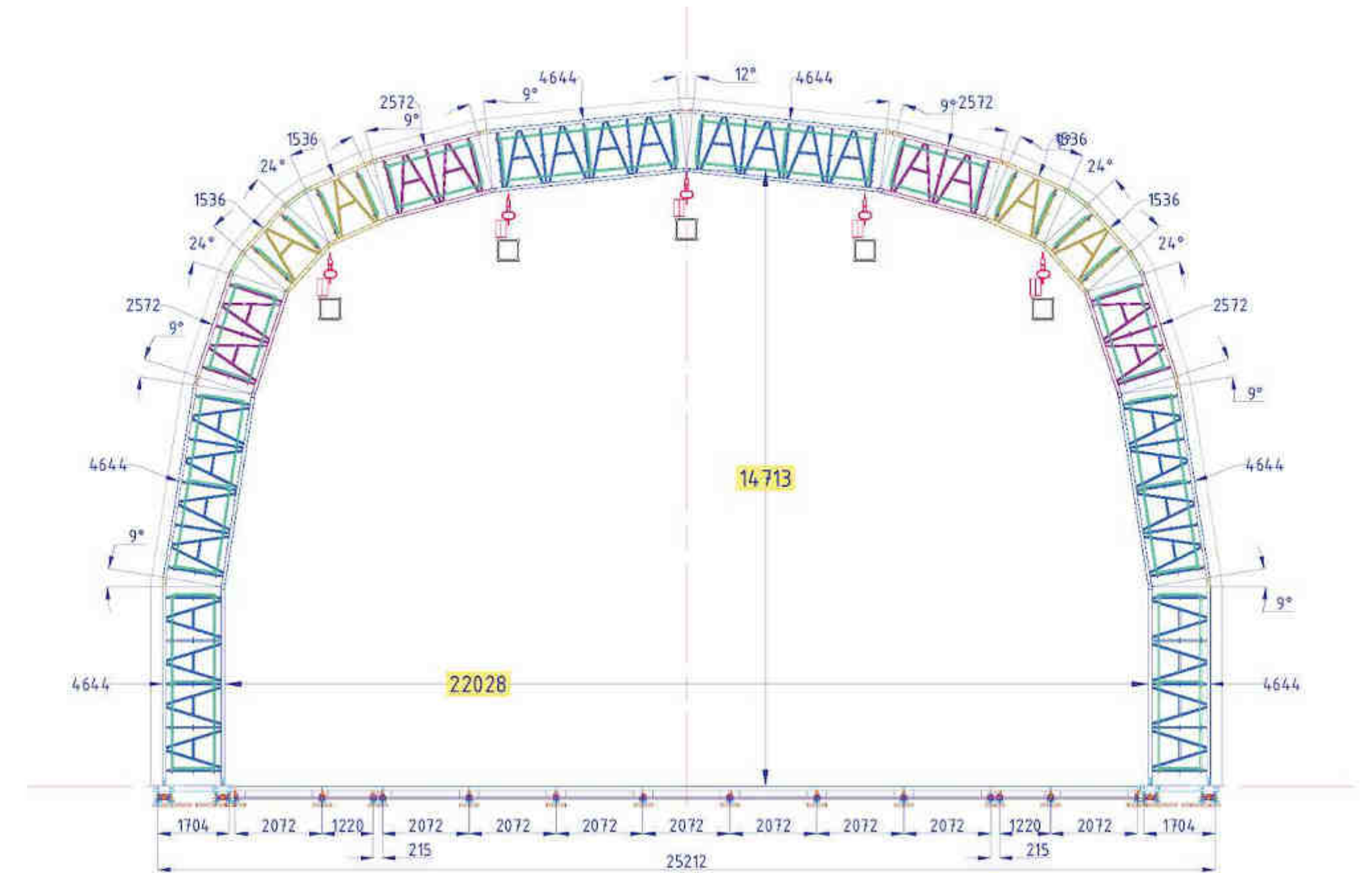
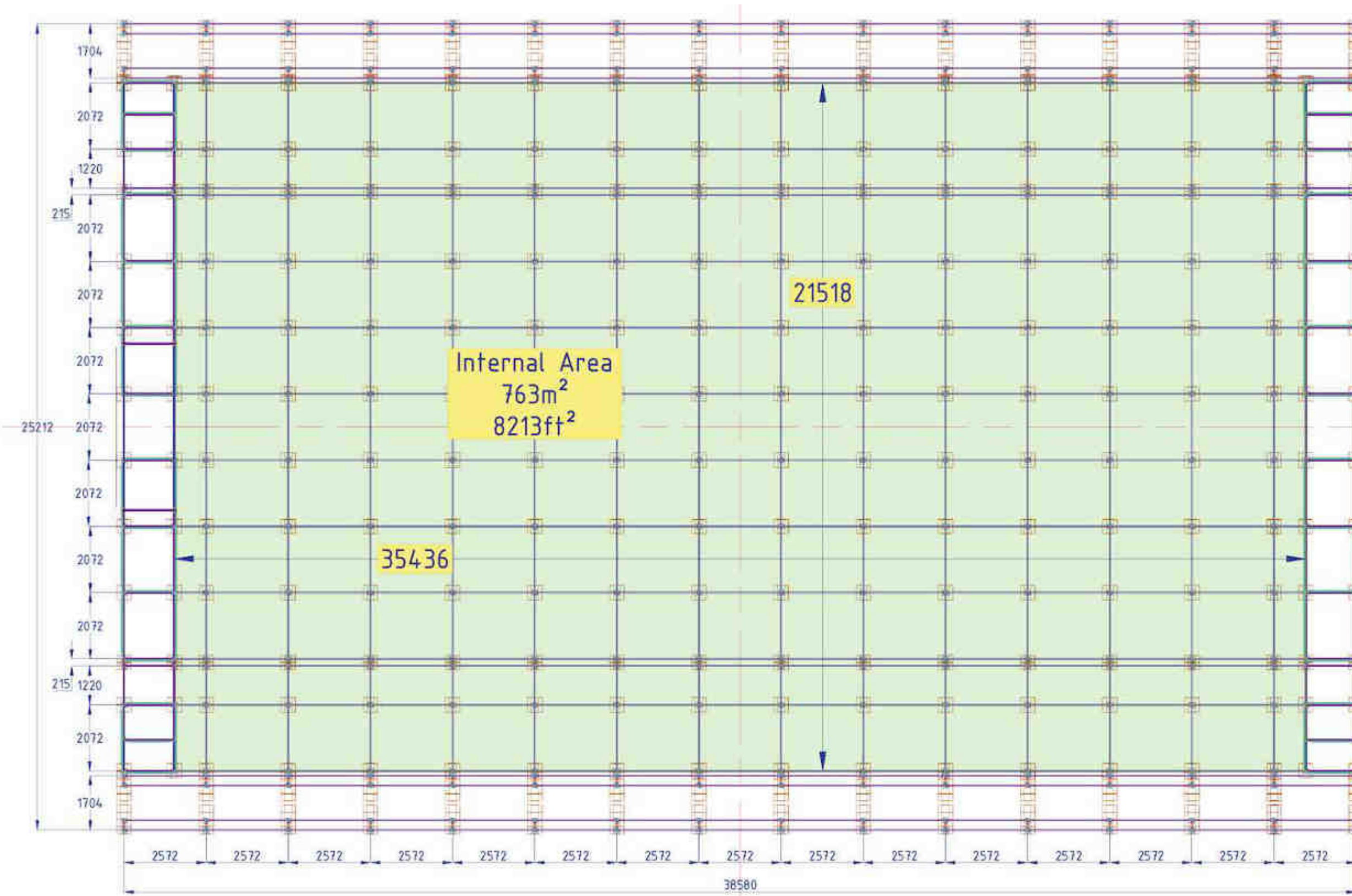


Large dock door for Artics access and good ground floor loading capabilities.



Highly effective insulation and sound proof properties. Fitted with removable acoustic black drapes.

Troubadour Stage 3 - Floor Plan





Production Hubs



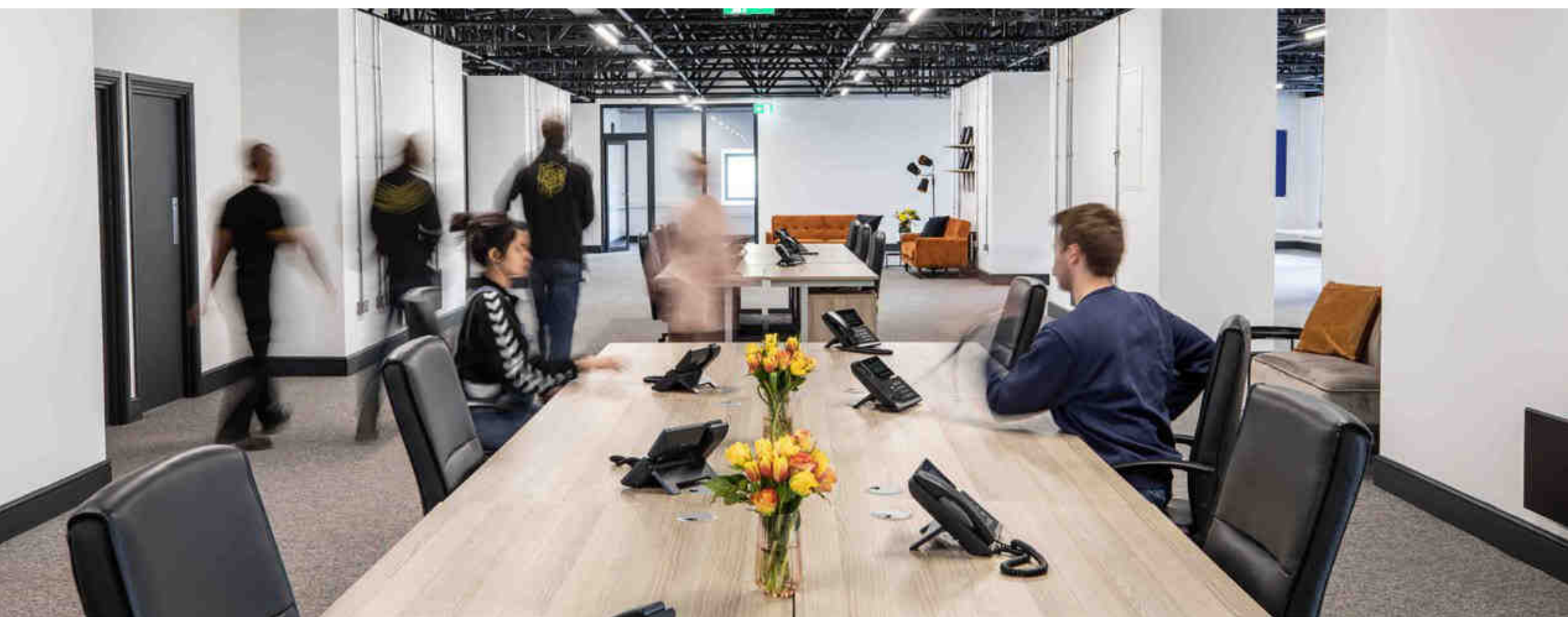
Large, modern and versatile open plan offices with canal views.

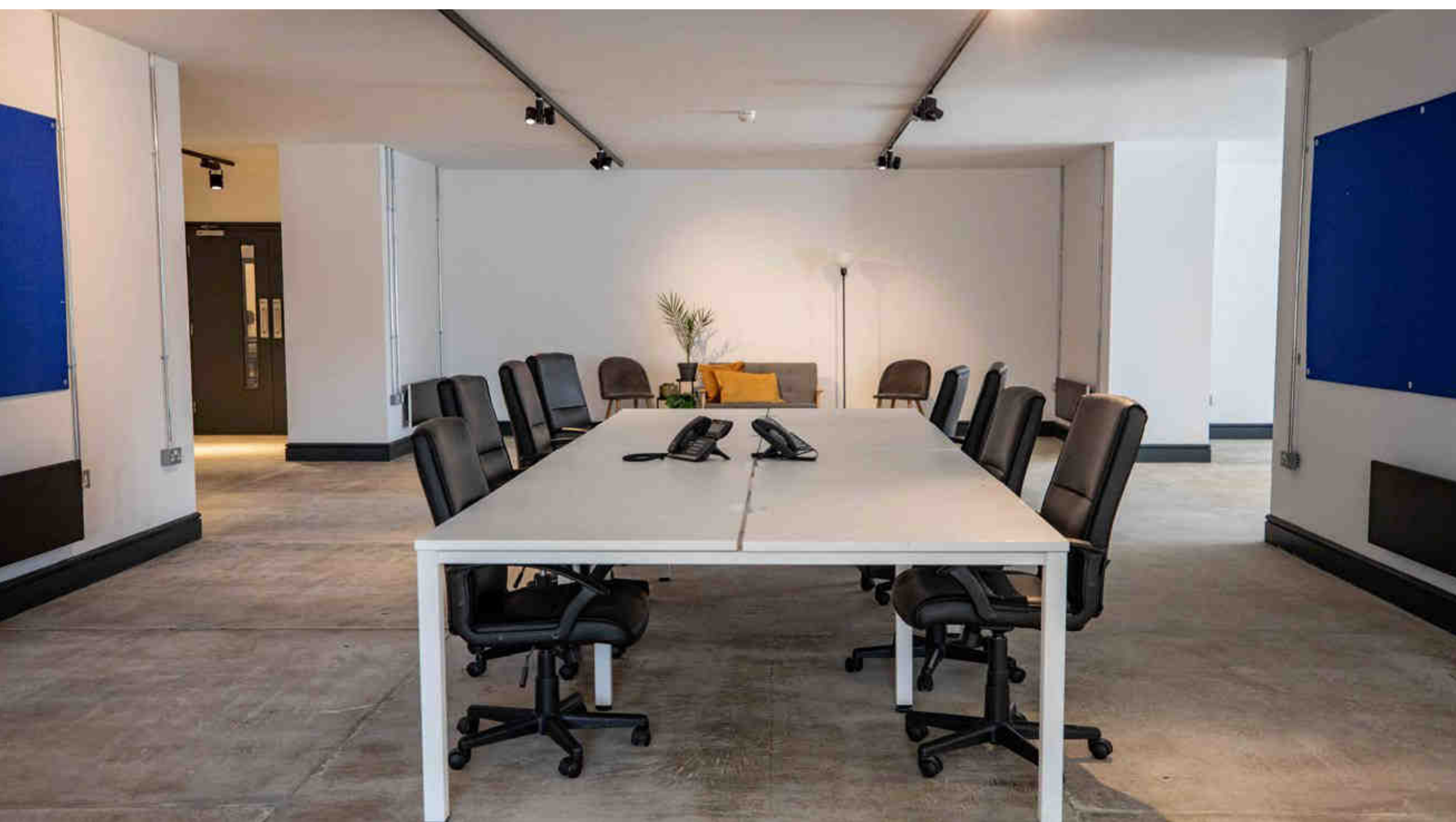


Stylish shared cafe and dinning space to unwind and relax.

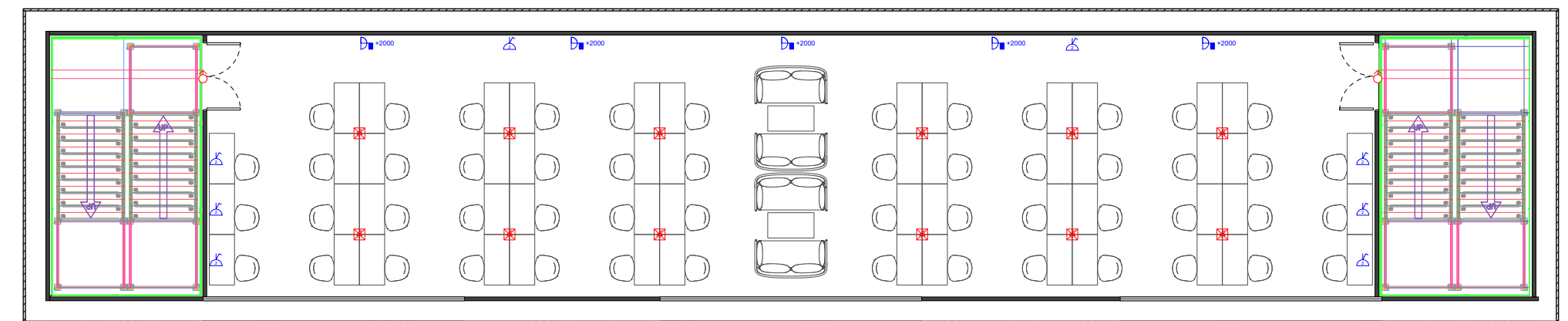
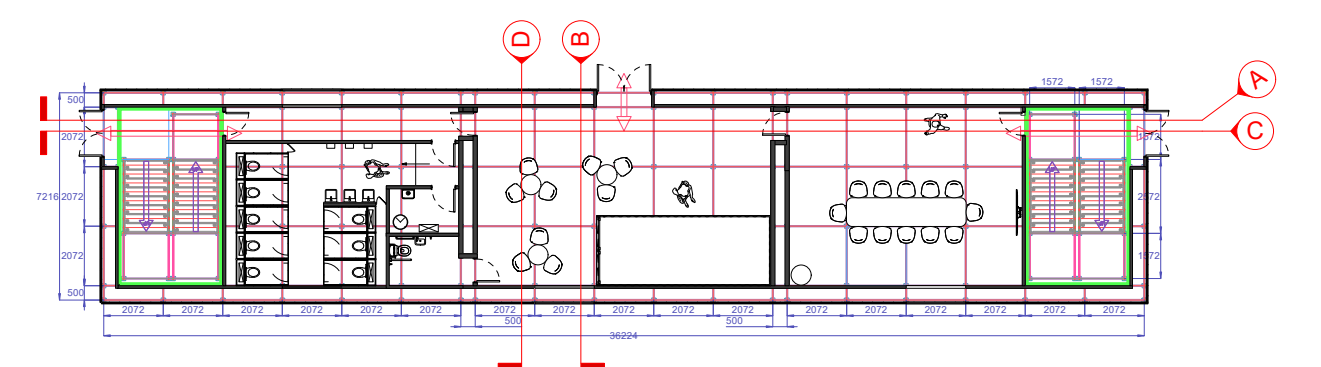
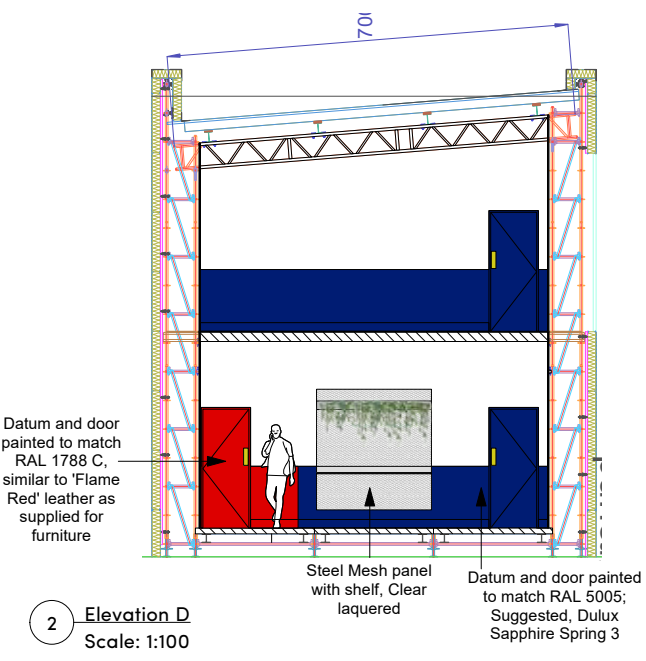
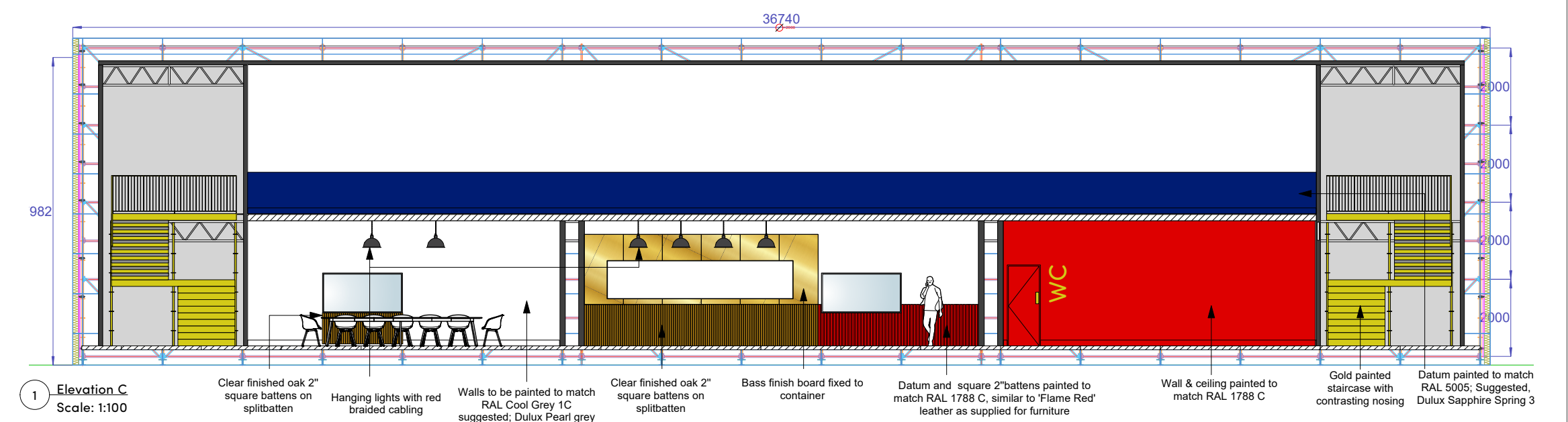
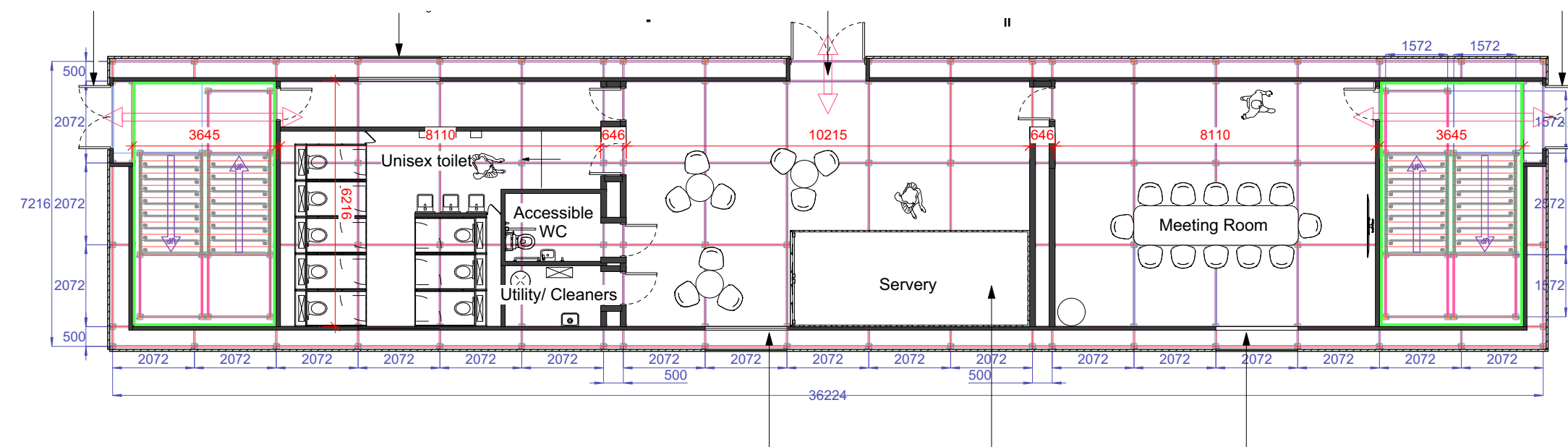
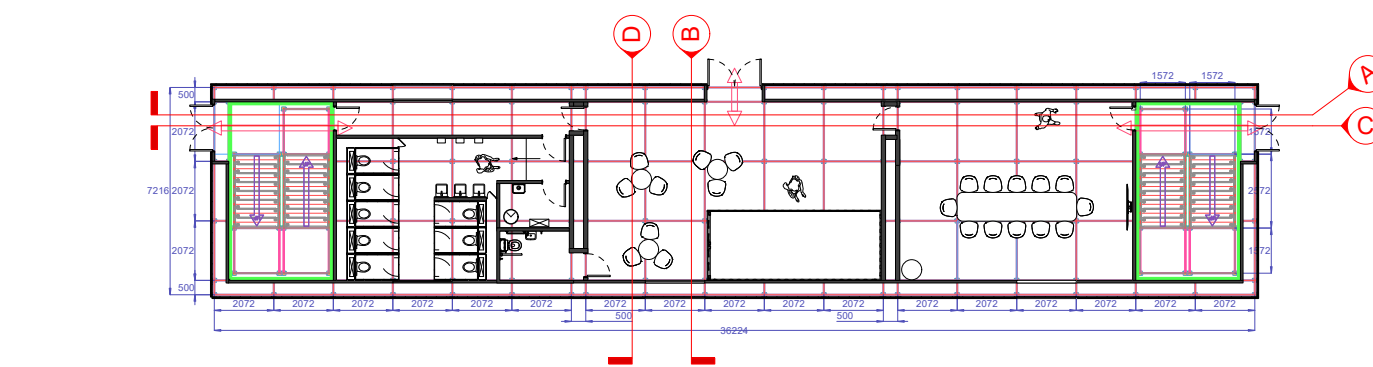
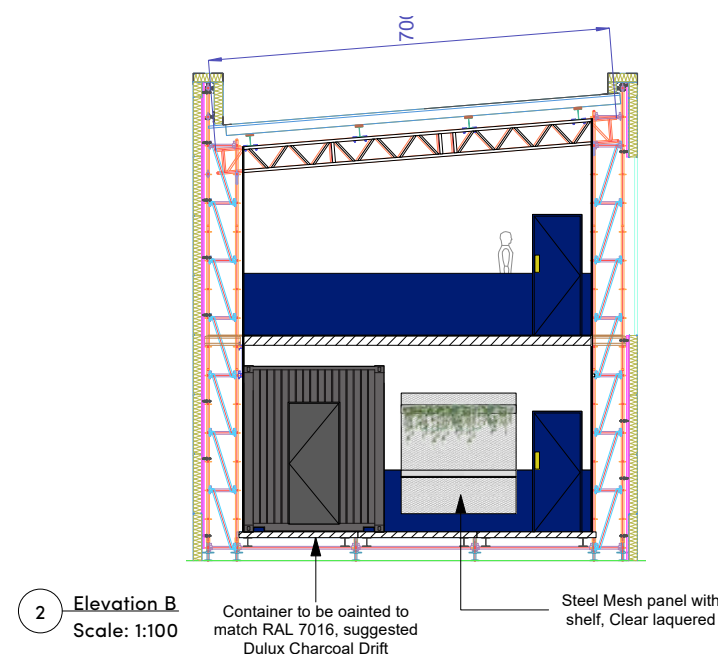
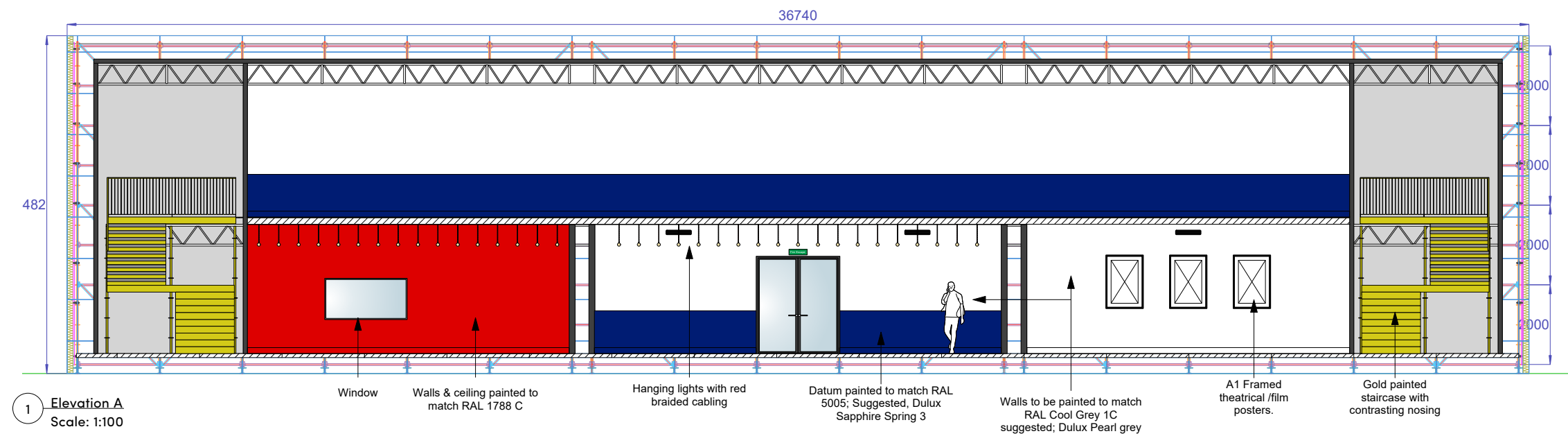


Fully equipped private meeting room available to book in advance.

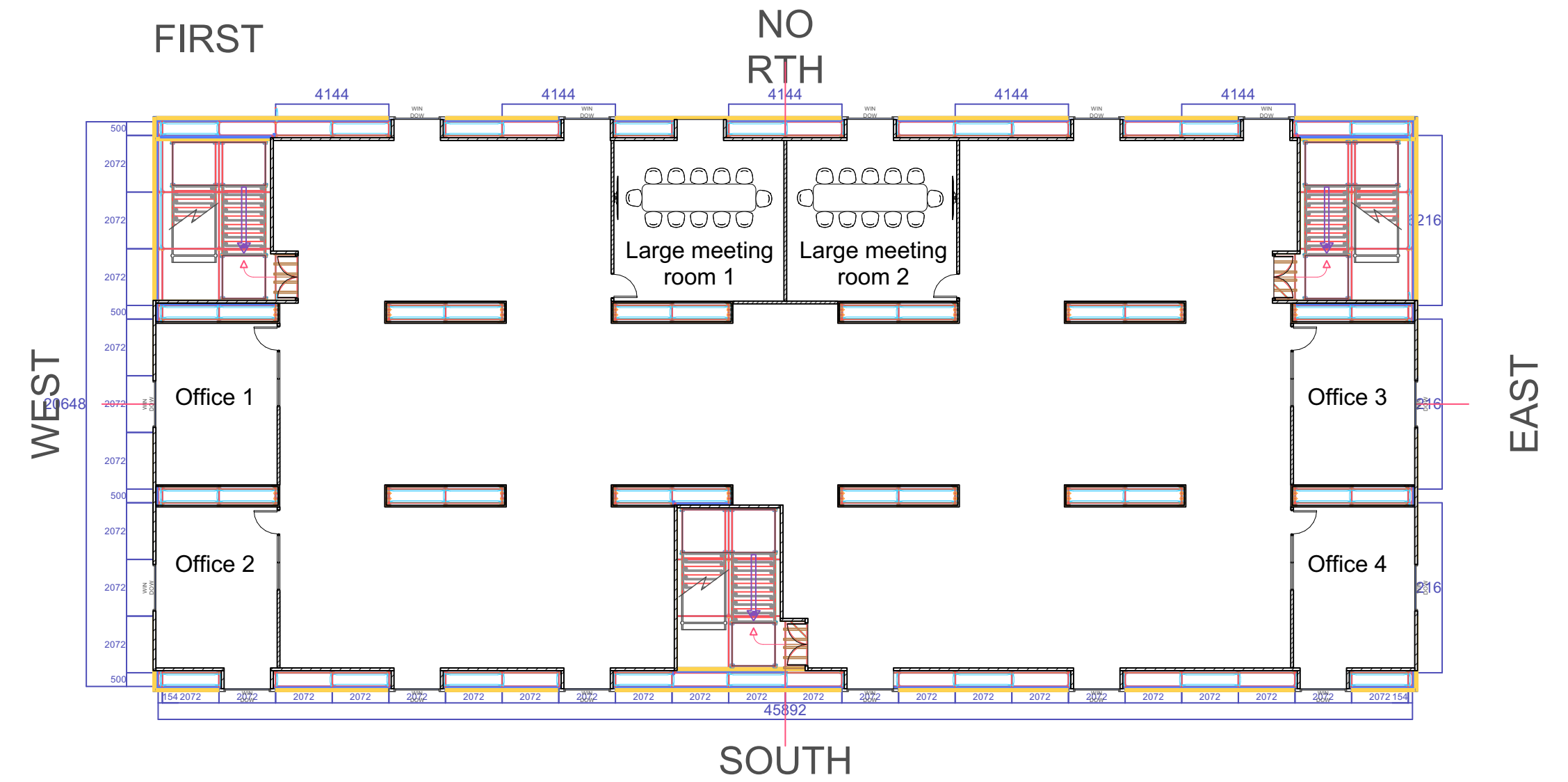
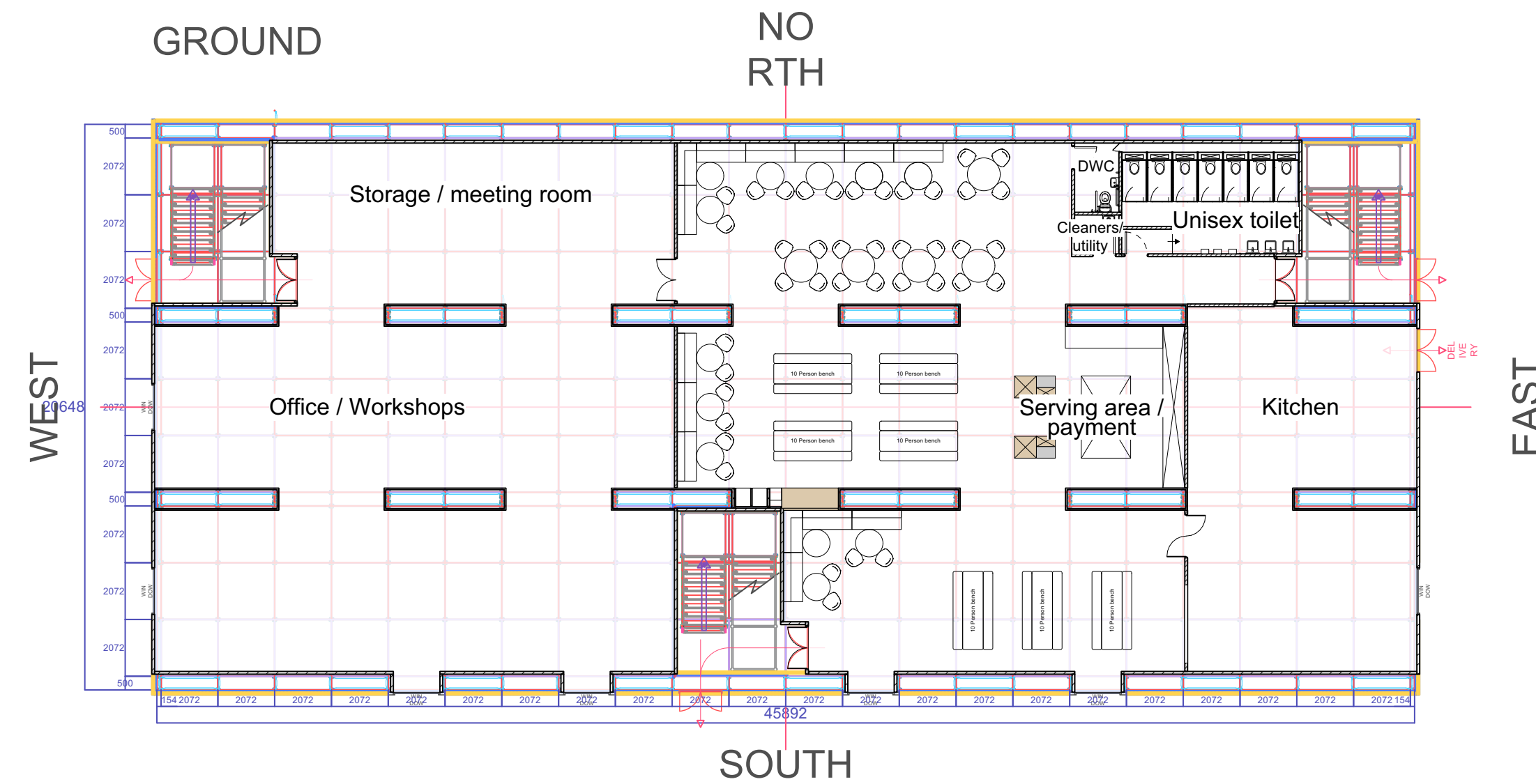




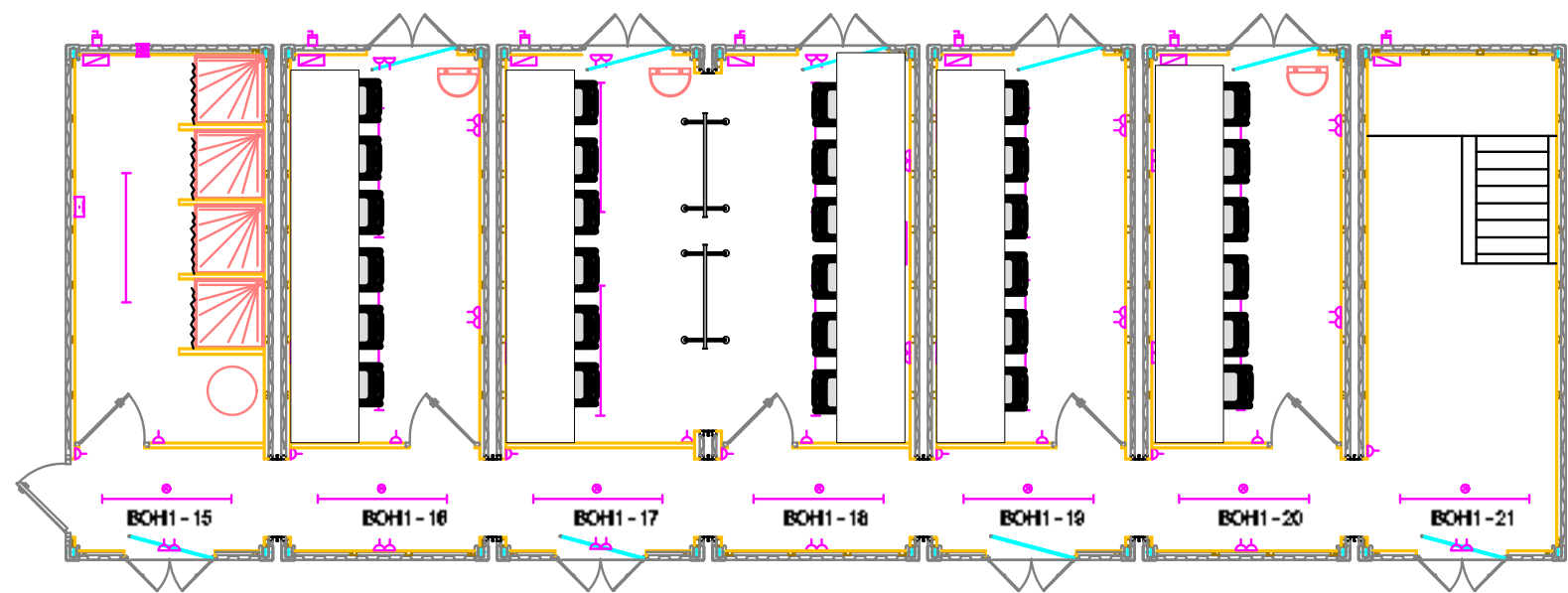
Production Hub Elevations & Plans



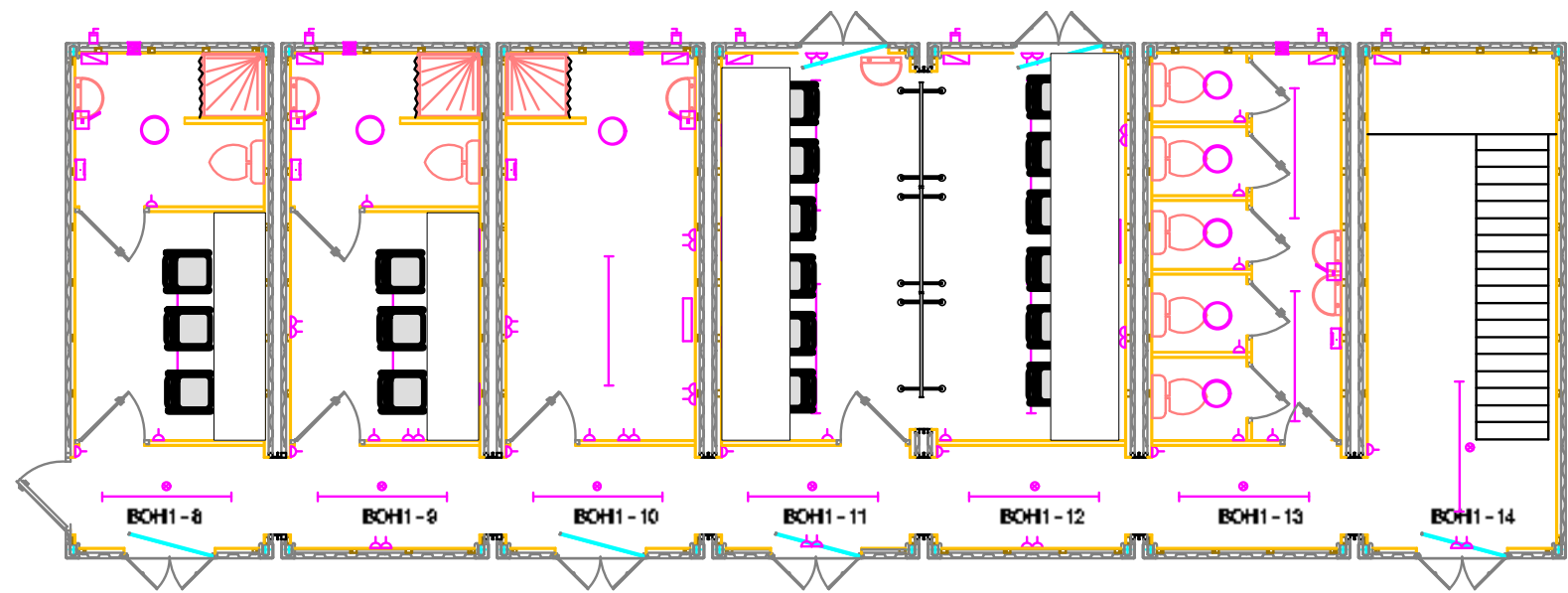
Production Hub 2 Plans



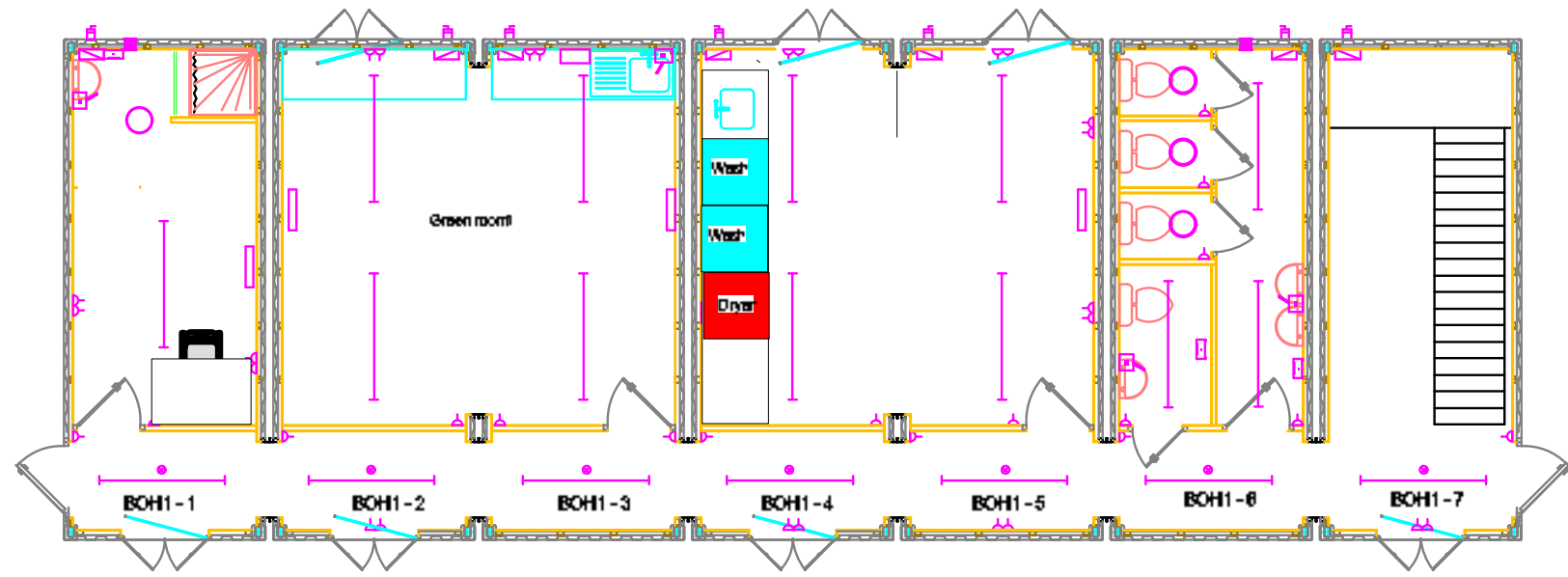
Troubadour Meridian Water Studios - Offices



SECOND FLOOR

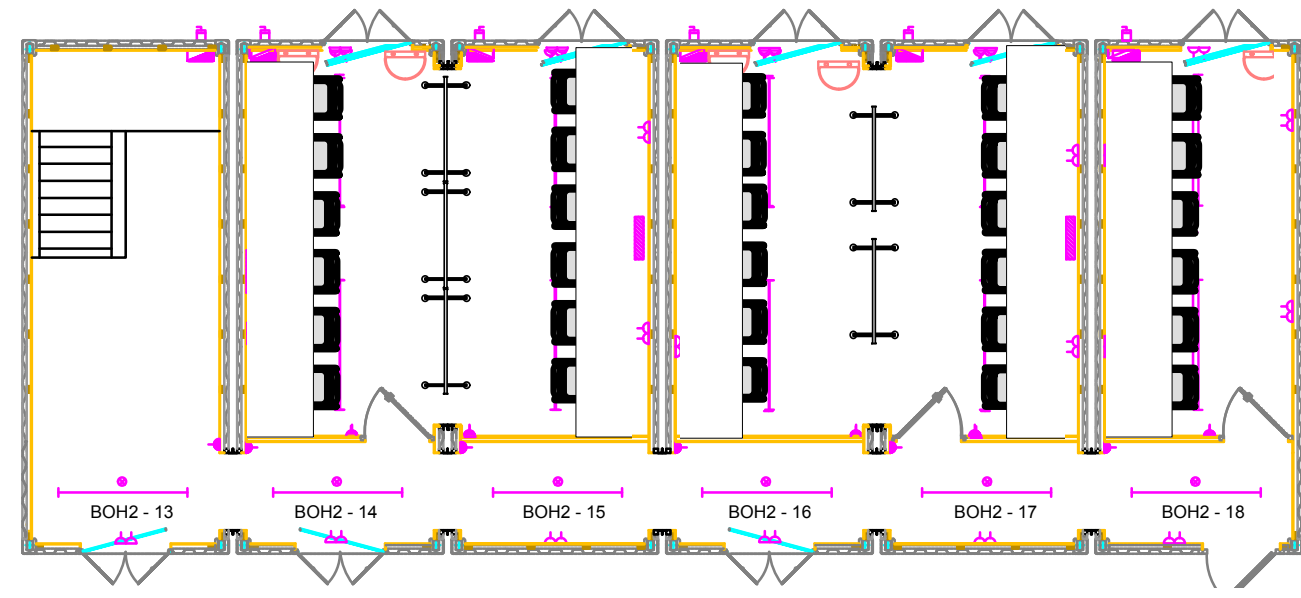


FIRST FLOOR

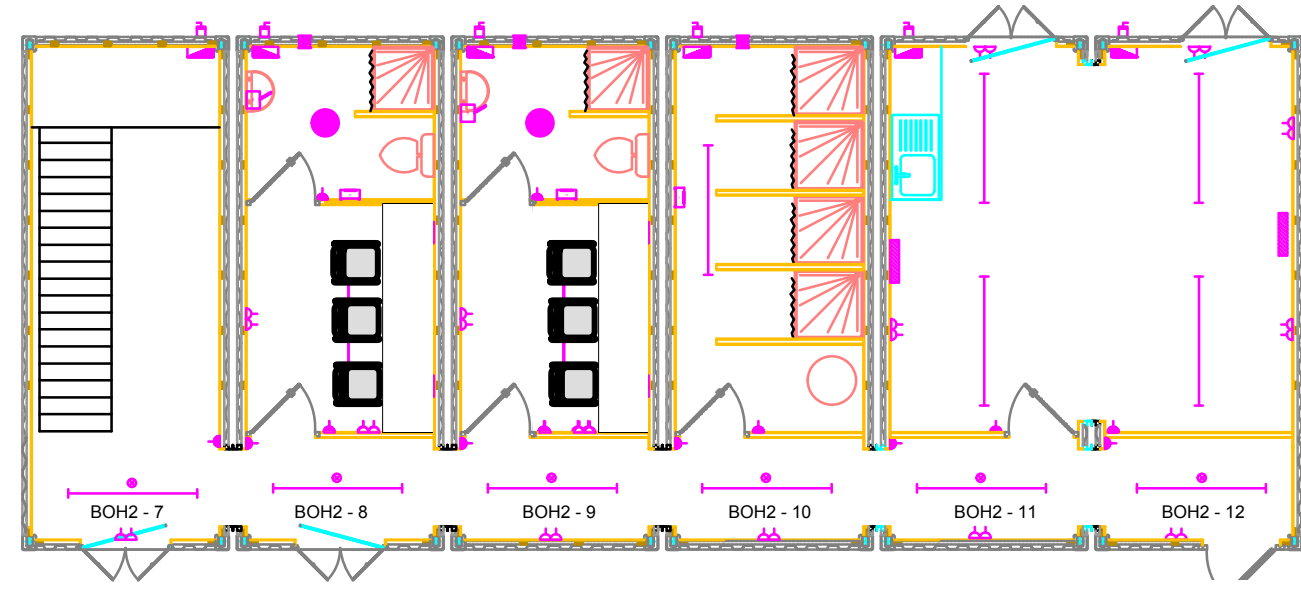


GROUND FLOOR

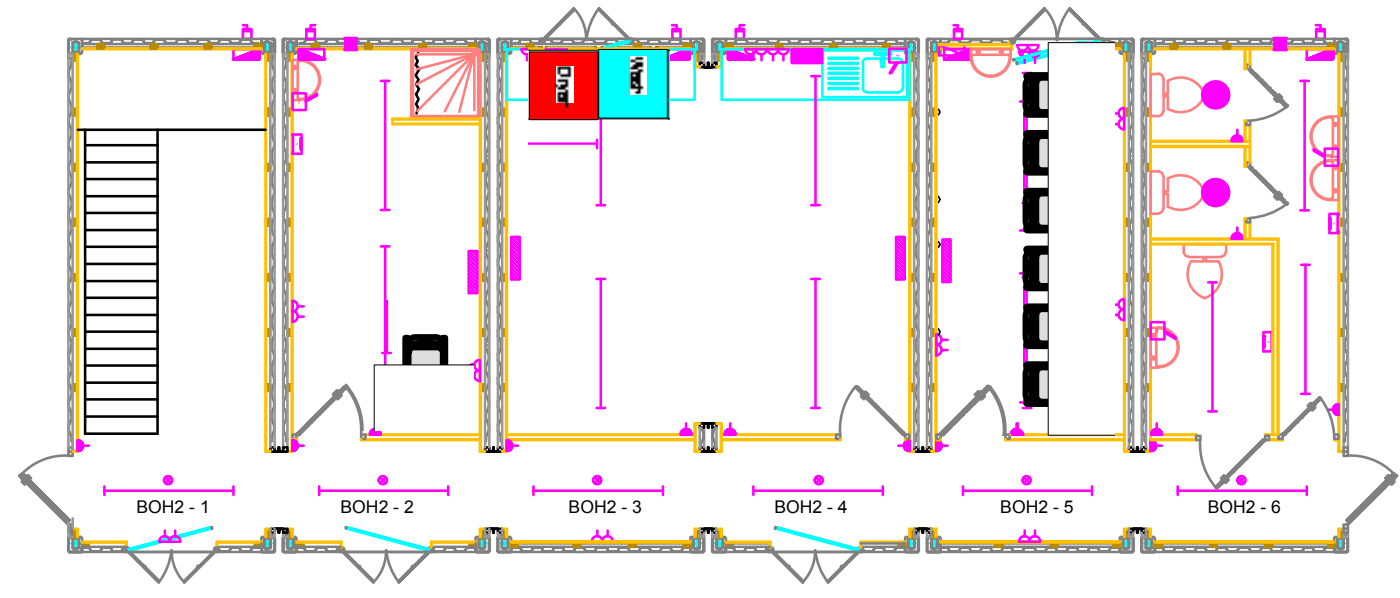
East Offices



SECOND FLOOR



FIRST FLOOR



GROUND FLOOR

West Offices

Previous Industry Clients



NETFLIX



National Theatre



LONDON FASHION WEEK

BURBERRY
LONDON ENGLAND



Canteen & Cafe

STUDIO 5IVE EXCLUSVE CATERERS



Troubadour Meridian Water Studios Full Scheme



Troubadour Meridian Water Studios consist of a complex of 5 purpose built studios including, office and storage facilities. The project will be broken into 2 phases:

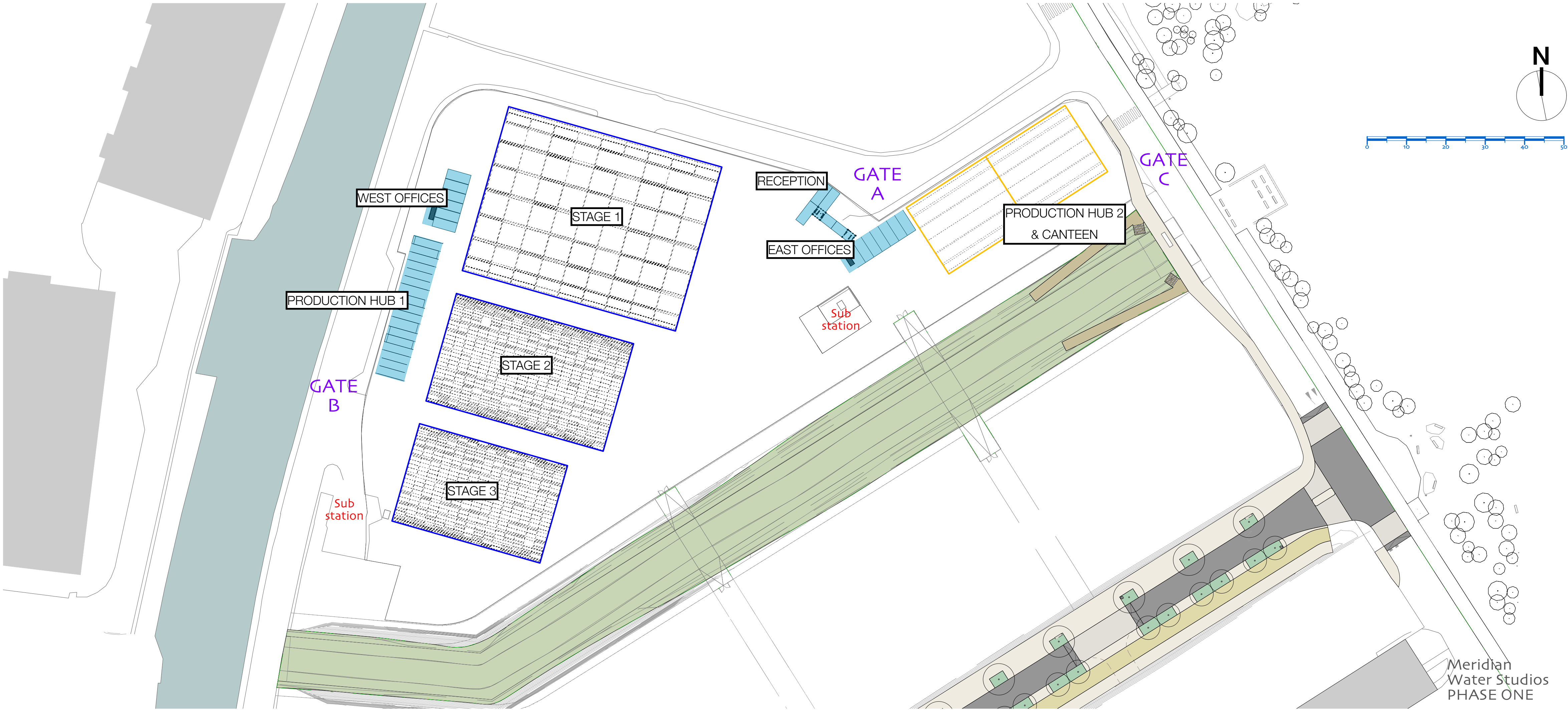
Phase 1: Now Open!

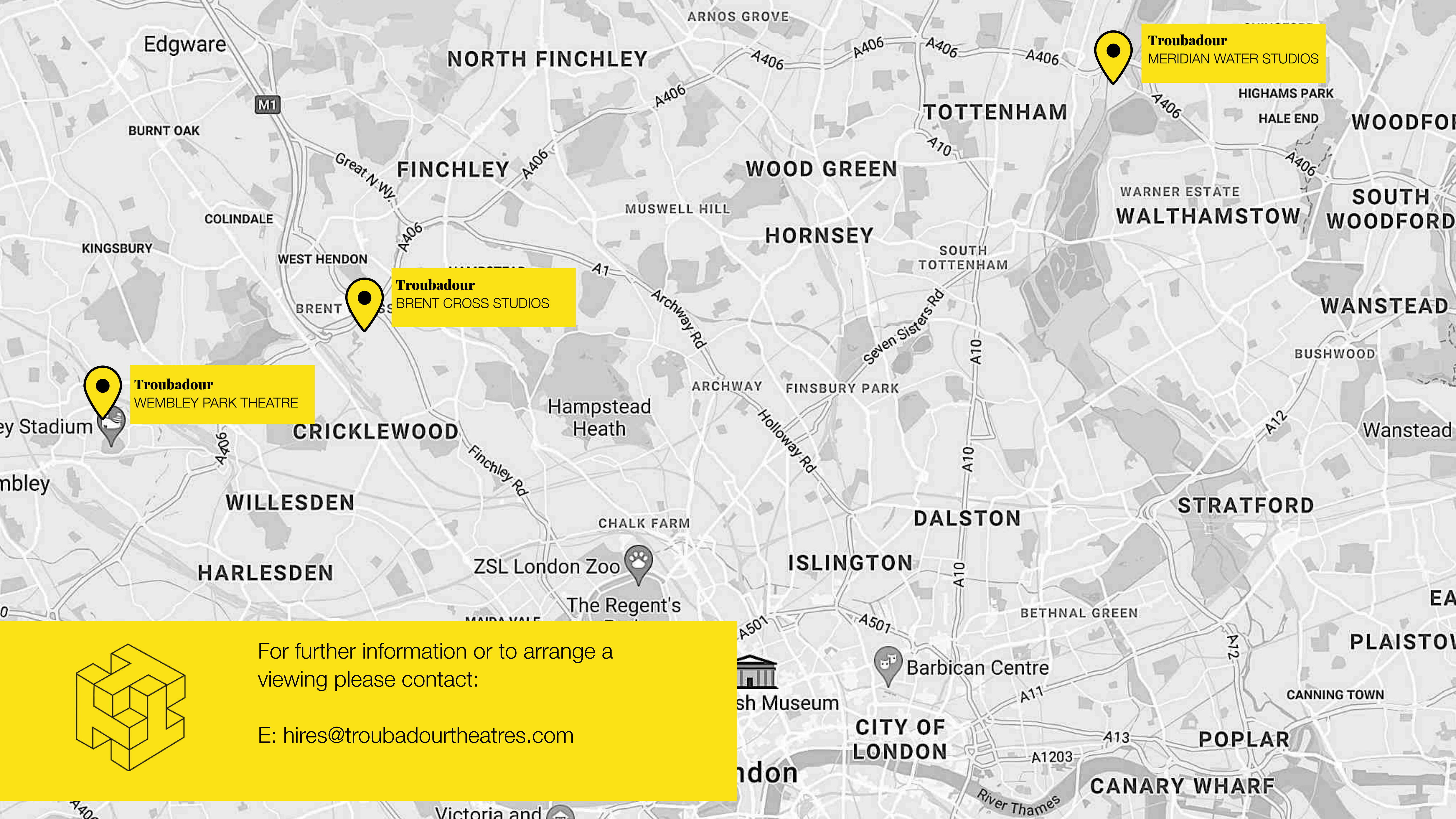
- Stage 1: 20,921 Ft²
- Stage 2: 11,216 Ft²
- Stage 3: 8,213 Ft²
- Work Shops: 25,000 Ft²
- Offices: 24,669 Ft²

Phase 2: January 2024

- Stage 4: 40,000 Ft²
- Stage 5: 20,000 Ft²
- Stage 6: 20,000 Ft²
- Work Shops: 10,000 Ft²
- Offices: 3,500 Ft²

Troubadour Meridian Water Studios – Site Plan (Phase 1)






Troubadour
MERIDIAN WATER STUDIOS

Troubadour
BRENT CROSS STUDIOS

Troubadour
WEMBLEY PARK THEATRE



For further information or to arrange a viewing please contact:

E: hires@troubadourtheatres.com